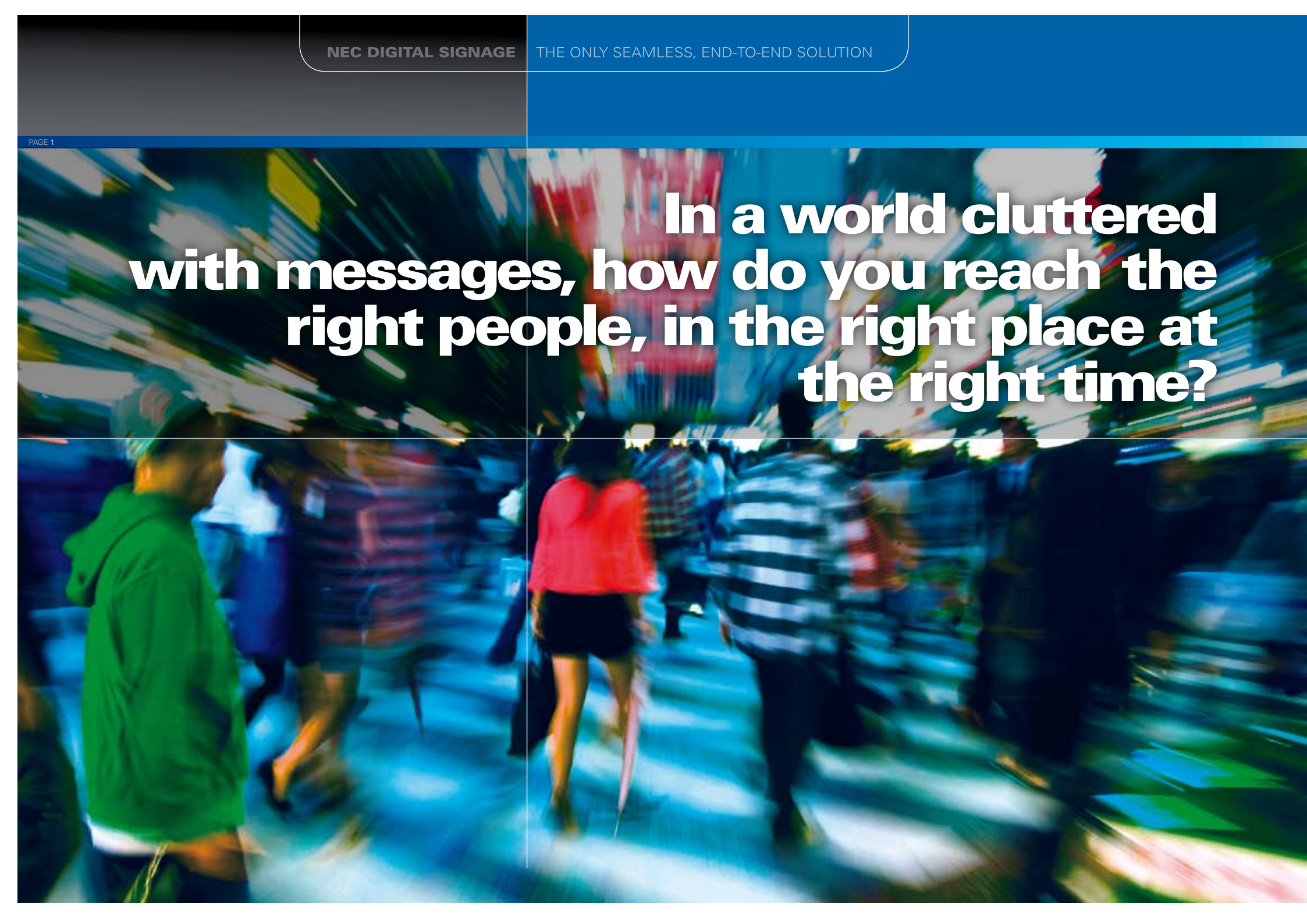


NEC Digital Signage Solutions





**In a world cluttered
with messages, how do you reach the
right people, in the right place at
the right time?**

How do you stand out from the crowd?

The answer is NEC.

NEC offer a leading digital signage solution that lets you distribute dynamic video, images, text and more direct to display screens anywhere, anytime!




From eye-catching advertisements and in-house promotions, to breaking news and announcements, and up-to-the-minute timetables and schedules, the possibilities are endless!

DEMYSTIFYING 'DIGITAL SIGNAGE'

Most of us think of digital signage as 'digital media and/or advertising'. Whilst that is indeed digital signage, it's only a small part of what a digital signage solution can do and the industries that can benefit from it.

Digital Signage, by definition, is an electronic billboard system, used to present dynamic information electronically, on flat panel displays such as LCD, Plasma or DLP Projectors.

Designed to replace and enhance traditional signage methods, whether billboard signs, printed material or static bulletin boards, Digital Signage merges the industries of advertising networks, point of purchase display merchandising and general information signage, to deliver:

-  **Dramatically more eye-catching active or static content.**
-  **The ability to, instantly, update or add-to content for an up-to-the-minute information service.**
-  **Specific messages to specific audiences in specific locations**

Thus, increasing audience attention and retention of your message.

HOW CAN IT BENEFIT AND ENHANCE YOUR BUSINESS?

No matter what the industry, we all have a common goal: To capture and hold our audience's attention. Because in today's fast paced, high tech information age, static information boards, advertising posters and flyers just don't cut it! A Digital Signage solution can answer all your needs within one easy system.

Research studies have proven that not only is audience retention of a message much higher when it is displayed through digital signage, but it's also that you will indeed increase sales and communicate more effectively with your target audience.

As well as doing your bit to reduce paper wastage, you will also save on printing and distribution costs. With an NEC digital signage system, any minor changes to your material is just a matter of a few mouse clicks click of the button.

Digital signage knows no boundaries and can be used in many different verticals and applications. The core idea behind digital signage is a network of display panels being centrally controlled by a single person, with the aim of enticing and engaging the targeted audience.

RESEARCH KEY FINDINGS

DIGITAL SIGNAGE ADVERTISING HAS STOPPING POWER**

Sixty-three percent of adults say that it catches their attention. This is the highest level reported across all media surveyed, including TV, the Internet, billboards, magazines, newspapers, radio, and mobile phone advertising.

Digital signage advertising intercepts people throughout their daily routines.**

On average, the general US population recalled having seen digital signage in six different types of locations during the past week. University-age people (18- to 24- year-olds) reported seeing it even more frequently in eight different types of locations in a week.

People rate advertising on digital signage more positively than other media across multiple measures.

Attention grabbing (63%)

Unique (58%)

Interesting (53%)

Entertaining (48%)

Less annoying than other media (26%)

Awareness of digital signage advertising is high**

Not surprisingly, television had the highest awareness rating of all media surveyed, but digital signage advertising was a close second. Sixty-two percent of adults say they have seen ads on digital signage over the past 12 months, and the figure is even higher for young adults between 18 and 24, at 75%. This awareness level is similar to that for advertisements on billboards

and in magazines and newspapers, and is better than awareness of advertising on mobile phones.

***Source "Digital out-of Home Media Awareness & Attitude Study, United States 2007"*

COMPARATIVE STUDY OF SPAR SUPERMARKETS IN FÜSSEN AND KEMPTEN, ALLGÄU (GERMANY)

Helmut Angl, owner of three SPAR supermarkets in the Allgäu region.

"Sales figures as well as the related volumes have increased considerably. In some areas we were able to move more than double the quantity of products, an unbelievable success. The investment in a digital signage system from NEC Display Solutions was completely paid back after just one year. I had been convinced for a fairly long time about this type of "new style advertising" and I am very happy that I have this kind of system in my supermarkets. We are also going to install the system in our SPAR supermarket in Kempten in the near future. When you also consider that we throw out around 50% of all POS materials, including posters, cardboard displays and stands for example, and don't use the majority of it, with retail signage, for the first time, we can now guarantee targeted advertising for our products."





Your silent sales person in a retail store promoting a brand or advertising a sale.



Your "concierge" at a hotel, bar or club, promoting facilities and in-house services, listing daily events, conference schedules, restaurant menus and of course local news and weather updates.

THE NEC DIGITAL SIGNAGE SOLUTION

At NEC, our focus is to understand how you work, what you would like to achieve, and to customise a solution that's right for you. And, as technology and your business needs further evolve, these solutions can be easily built upon and expanded.

There are specific components that make up a Digital Signage solution. NEC is the only manufacturer capable of offering a complete end-to-end Digital Signage solution, under the one brand - from the hardware, software to the broadband distribution. This means one point of contact – from quotation through to implementation.



Add life to a government or corporate office building by welcoming VIPs and directing visitors to their destination. Deliver performance results or business updates to your staff quickly and convey important safety information to a large number people, quickly and efficiently.



An educational institution keeping students up to date with events or important notices, even trying to guiding your students around a large campus.

1 SOFTWARE

PanelDirector is NEC's proprietary scheduling software. PanelDirector is used to manage, schedule and distribute your content across both small or large scale networks of display panels. Using PanelDirector you can dynamically display digital advertising or information content across your network on targeted panels, based on the individual schedules for each panel.

PanelDirector is the heart of the NEC Digital Signage Solution, connecting all the elements together. PanelDirector provides a concise and easy to use interface, removing unnecessary and confusing clutter from a user's desktop. PanelDirector is available in two versions: Standard and Professional. The size of your digital signage system and business requirements will determine which version you should choose.



Using PanelDirector

NEC PanelDirector is easy to use, giving you the ability to publish your content with four quick and easy steps:

PREPARE THE CONTENT

Create content files with PowerPoint®, HTML editors, Flash programs, or the editing suite of your choice.

REGISTER A SCHEDULE

Add content files to a playlist or "Program" through the PanelDirector CentreSystem

CREATE A PROGRAM

Drag & Drop the "Program" onto a schedule, specifying the date and time.

DISTRIBUTION

Distribute the Program and Schedule Data to the PanelSystems.

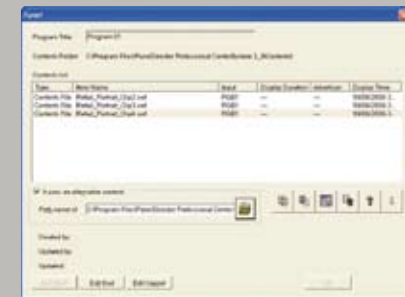
PanelDirector Features and Functions

PROGRAMS

Content files are added like a playlist into a Program. Programs form the elements of schedules and set the parameters for displaying each piece of content. Programs can also be combined together to create Class Programs allowing users the flexibility to re-use programs in various ways.



PanelDirector repeats a program to fill a scheduled time. If the repeated program does not exactly fill that time, a filler file is inserted at the end. This means the program will not appear 'cut off' at any time.

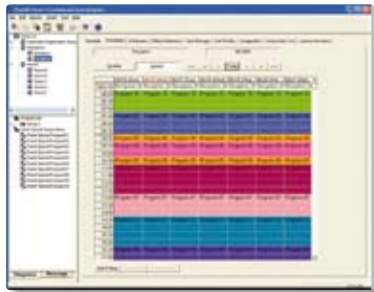


Audio files may also be added to programs as background music or an audio track to accompany content files.

SCHEDULE MANAGEMENT

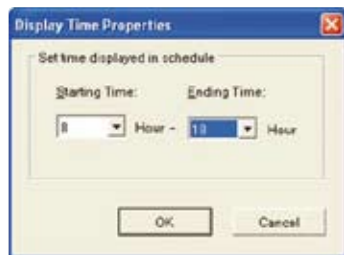
You can easily drag & drop programs to create or edit schedules by date and time, daily, weekly, or monthly. Schedules are easy to maintain and can be edited individually or in groups.

Users can easily see what is scheduled at a glance. Programs are distinguished by different colours, indicating their duration and repetition throughout the schedule.



Schedules can be applied in two layers allowing for default or group schedules, and may operate in calendar mode, timetable mode (Monday ~ Sunday) or a combination of both.

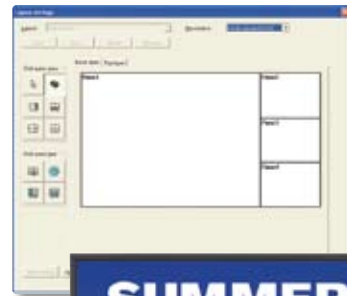
Operation times for each panel may be set to ensure programs can only be scheduled between the required working hours, thereby reducing your running costs and extending the life of the display panel.



At the end of the day's schedule, display panels will automatically power off until the schedule recommences the following day.

SPLIT SCREEN DISPLAY

PanelDirector supports multiple screen or program layouts. Each scheduled program may have a different layout, allowing flexibility in the look and feel of your display. Program layouts allow you to divide a display panel from a full screen to a maximum of twenty independent panes, each pane displaying different content.



Program layouts are built from two layers: the base layer providing structured yet flexible divisions, and the top layer, freeform windows. Panes can be allocated to system objects like clocks or scrolling text, or left to the user's discretion.

Program layouts also provide support for displays installed in a landscape or portrait orientation. Layouts can be set to specific panel resolutions or to fixed aspect ratios.

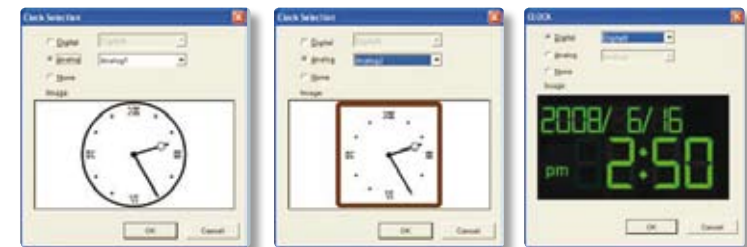
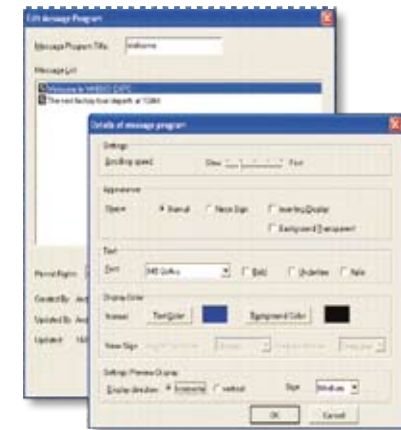
SCROLLING MESSAGES

Scrolling text messages formatted in various styles may be scheduled to display horizontally or vertically. Different scrolling text messages can be created with various styles ready to be allocated to a specific program.

Style formatting includes font type, colour, size, orientation and background colour. Scrolling speeds are also variable.

SYSTEM CLOCKS

PanelDirector provides eight types of digital style clocks, and two types of analogue style clocks for integration into the designated display area. The PanelDirector Professional version



provides the ability for users to upload custom flash based clocks as system objects for all users to access.

CONTENT FORMATS

As PanelDirector supports a wide range of content types, you can continue to use the content creation application of your choosing and avoid the challenges and costs of learning how to use a new production suite. Content can also be created by external agencies without the need to access your digital signage system.

File Formats Supported	Extension	
HTML Files	.html .htm .mht .mhtml	
Shockwave Flash	.swf	
PowerPoint Files	.ppt .pps .pptx .pps	
Still Images	.bmp .jpg .png .gif	
Motion Video	MPEG	.mpg .mpeg .m1v .mp2 .mpa
	Windows Media	.avi .wmv, .wma .asf, .wm
	RealMedia	.ra .rm .rmj .rms
	QuickTime	.mov
	DVD	.vob
System Integration	URL .exe .bat .com	
Codec types such as XviD and DivX etc are also supported		

The wide range of supported file formats allows for

integration with external sources like databases, displaying live RSS feeds, interactivity with external triggers such as RFID tags, the possibilities are endless.

TOUCH PANEL SUPPORT



Touch screens are often included in Digital Signage Systems. PanelDirector provides several options for driving your touch screen, including linking to external applications.

SCHEDULE INTERRUPTION

Users can at any time distribute a program that interrupts the running schedule on a display or group of displays. The interruption will run for a specified duration or until manually cleared. When the interruption terminates, the displays return to their normal schedule.

DISTRIBUTION

PanelDirector Standard distributes content data and schedules by unicast distribution over the TCP/IP network.

PanelDirector Professional provides the option to select the distribution method according to your network environment. Both HTTP and TCP protocols are supported and ports can be selected as required.

Both Standard and Professional versions allow distributions to be carried out by means of external media like USB memory sticks, enabling distributions where there is no network present.

SYSTEM AUTOMATION

Operation of your Digital Signage System can be completely automated. Displays will power on and off at set times, and time synchronisations occur in the background without interrupting the active display. PanelDirector Professional allows the automatic distribution of data at scheduled times to targeted panels. The Professional version includes the new facility to list public holidays or any date you wish to exclude from operation. If your business is closed on Melbourne Cup Day, your Digital Signage System can also have the day off.

LOGGING

All functions and processes within PanelDirector are logged. Where "Proof of Play Out" is required, typically where income is derived, PanelDirector Professional will automatically retrieve the play out logs from the Digital Signage Players across the network, ready for reporting.



USER ACCESS

PanelDirector Standard only supports single user access with full system control. Multiple users may not log in from separate workstations. PanelDirector Professional supports multiple user access and user group profiles. Profiles can be created to restrict or allow access to various functions within PanelDirector.

DISPLAY DEVICE CONTROL

PanelDirector includes RS232 Serial support for all NEC public display devices, allowing for control of input and power.

PANELSYSTEM MANAGEMENT

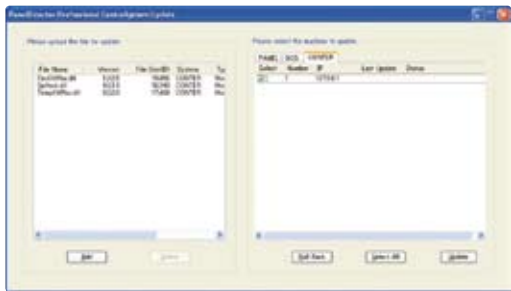
PanelSystems (Digital Signage Players) are easily added to the PanelDirector system with only a few mouse clicks. The Professional PanelSystem can be manually configured or it will automatically login to the DCS and register itself ready for use. If required configurations and network settings are easily modified from the CentreSystem.

LARGE SYSTEM MANAGEMENT

Large Digital Signage Networks may require additional File Servers or DCS Servers to assist with the management of data distribution and server load. PanelDirector Professional has the facility to add additional Sub File Servers across your wide area network optimising data distribution to the Panels. Additional Sub DCS servers can also be added where required to enhance multiple user access. PanelDirector automatically synchronises data between the File & DCS Servers.

SYSTEM UPDATES

PanelDirector software is easily updated across



the network through the Module Update Tool. All components of PanelDirector: CentreSystem, Data Centre Service and PanelSystems, can be updated across the network with the Module Update Tool.

WHICH VERSION DO I NEED?

There are significant differences between PanelDirector Standard and Professional versions. Above is a table listing some of the key differences between the two versions. As a total solution provider of Digital Signage, not only can NEC guide you in your choice of software and hardware, but we can also assist in the total design of your Digital Signage Solution.

UPGRADE PATH

Many organisations choose to start with a small Digital Signage System, with the objective of expanding the system with their business needs. PanelDirector has been designed to do exactly that. Not only is it easy to add display panels to an existing system, but NEC have also simplified the process of upgrading from the Standard version to the Professional version. The PanelSystem application resident on the Digital Signage Player has been designed to operate with both

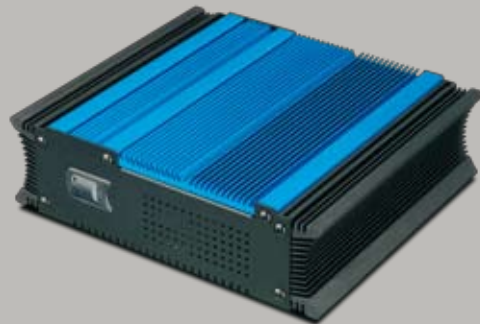
System Requirements		Standard	Professional
Scheduling	Special Program Event allocated to each display panel	•	•
	Add public holidays or non operational days	•	•
	Scrolling Text Messages with Multiple Language Support	•	•
Reporting	Proof of Play Out, log retrieval	•	•
	Status of Programs and Schedules	•	•
	System Log Retrieval from Panels	•	•
	PanelSystem Heart Beat	•	•
Distribution	Number of Supported Panels	50	Unlimited
	Scheduled Data Distribution	•	•
	Data Distribution Method	Unicast	TCP + HTTP
	Automatic adjustment to varying network conditions	•	•
	Data integrity Check	•	•
	Support for additional File Servers	•	Unlimited
	Sub Server (DCS) Support	•	•
	Time Synchronisation	•	•
	Distribution error retry	Manual Interaction	•
Access	User restrictions and profiles	•	•
	Multiple User Access	•	•

2 HARDWARE

Media Player

The NEC Digital Signage Media Players form an integral part of the NEC Digital Signage Solution, having been designed to fit neatly and discreetly behind your flat panel installation. A mounting kit is included for easy attachment direct to the back of your flat panel or to a wall. Despite their compact size, these players pack a formidable punch, being compatible with virtually any display resolution, including full high definition (1920x1080). The NEC Digital Signage players are also fanless, so won't interrupt accompanying audio or create any background white noise but most importantly, provide greatly increased reliability – a must for any 24/7 Digital Signage system.

Players are available in different models including a rack mount version, to cater for different content and installation requirements.



PC's

NEC offers a complete range of notebook and desktop computers. Whether you need a powerful stand-alone work station, or stylish designer notebook, NEC is able to provide the ultimate computing solution. All products are subject to various industry standard tests and assessments right from the development stages through the manufacturing processes.

In the unlikely event that anything does go wrong, all NEC Notebooks and Desktops come with an On-Site warranty, backed by our own customer support centre.

Servers

NEC Express Servers are the ideal choice for your Digital Signage network. A single moment in downtime is not an option in today's business environment – featuring a chipset designed to ensure the physically replicated main components operate in lockstep, the Intel Architecture-based NEC Express5800/ft series can operate through a hardware failure and delivers exceptional availability...the choice for supreme reliability.

Reliability - Replicated main components eliminate potential failure points to ensure continuous processing without any system interruption or loss



of data should a primary component fail. Users can then replace the failed component while the system is running.

Flexibility - The NEC Express5800 series supports Microsoft Windows Server 2003 R2 and Linux, and allows users to run middleware and applications without modification, making it easy to deploy a system with outstanding availability.

Display Devices

NEC has years of experience in providing digital display solutions to a number of Digital Signage environments. With an award winning range of LCD, Plasma and DLP Projector technology solutions, NEC provides display options for any application.

LCD Information Displays - These large-screen LCD displays take your Digital Signage applications to a new level of performance.

- Ultra-thin-bezel design is ideal for tiled video walls, up to 5x5 Matrixes
- Built-in expansion slot allows for seamless integration of future third-party components.
- Exclusive panel design leads to less image persistence and a longer display life.
- Optional detachable speakers available.
- Display management controls lower energy consumption and running costs.

- Internal temperature sensors control self-protective circuits to minimize heat damage.
- 110-bit gamma lookup table for superior colour performance.
- High-definition display provides optimal resolution, Full high definition of select models (1920x1080).

Plasma Commercial Displays - Equip your video-intensive applications with the NEC PlasmaSync Professional Series, large-screen plasma displays that bring moving images to life with amazing detail and rich colour. Available in 42", 50" and 60" screen sizes with optional speakers and stand, these displays are cost effective for Digital Signage applications.

- High-definition display provides optimal resolution.
- Superior video quality allows for optimized interpolation of moving images for a smoother picture with greater detail and deeper blacks.



- Comprehensive input panel, including DVI with HDCP inputs, delivers the latest in digital connectivity.
- Complete RS-232 input and output control provides easy setup to control systems.
- Video tiling capability enables built-in image matrixing to be split into plasma walls (up to 25 displays in a 5x5 matrix) in addition to vertical and panoramic configurations.
- Enhanced split screen allows two sources to be displayed on the screen with each resulting window offering multiple configurations and size options.

DLP Projectors

NEC's large venue DLP projectors provide bright and clear images with high ANSI lumens, vertical and horizontal lens shift allowing flexible projector placement and 5 optional bayonet style lenses, making them the perfect choice for extended use installation projects. They provide a suite of networking technologies and asset management features, making them the perfect choice for the most demanding Digital Signage installations.

- Single chip DLP™ Technology.
- Extended use operation.
- Complete line of optional bayonet style lenses.
- Advanced video processing with BrilliantColor™.
- Complete control of projector using RS-232/LAN from a control system.
- Dual lamp operation providing redundancy.





LCD VS PLASMA COMPARISON

Both plasma and LCD have their strengths and weaknesses and choosing the right technology is dependant upon your application. In an environment where video is the primary source, the recommendation would be Plasma. Plasma technology has far superior colour reproduction, providing extra shades of red, green and blue. Plasma is also equipped to handle contrast more efficiently, assuring your black levels are sharper in darker scenes. At present plasma is still the less expensive technology (inch for inch) in a commercial grade panel, as this technology is more mature than LCD.

Plasma does have its down falls though. Burn in is still a concern, though this has improved over the years. However, if you leave a static image on a Plasma panel for a long period of time, it can cause permanently irreparable burn into the panel. NEC plasmas have six anti burn-in features available through the on-screen management system.

These can be set to activate at sporadic times that suit you and the content you are running.

Plasma is also a heavier technology than LCD, with the average 42" plasma weighing in at approx 42kg and 40" LCD at 29kgs.

LCD Technology is fast becoming the technology of choice for Digital Signage or for any application that is displaying PC based content:

LCD is a more robust technology, which is a definite advantage if the product is in a remote location - as the administrator you do not want to be worrying about how the content will affect the life span of the panel. E.g. Passenger information in airports or on railway stations or in shopping centres running advertising.

LCD displays have a less reflective screen, making it the better choice for environments where there is a lot of ambient light.

LCD pricing has dramatically decreased over the last year and is now considered a more reliable and cost effective solution, when comparing the life of the panels (TCO).

The key to choosing the right technology in a Digital Signage system is to look at location, type of content, daily running hours, support requirements, what sort of control is required over the screens and the connectivity.

The last thing to remember is that any environment running panels for more than 5 hours a day needs commercial grade panels. Commercial grade panels are designed for 24/7 applications and warranted as such. The lure of the cheaper, domestic grade LCD or plasma, may be fraught with problems down the track as they are not designed for the extended usage hours required in a Digital Signage application.

THE KEY FEATURES TO LOOK FOR IN YOUR COMMERCIAL PANELS ARE:

- 1 Ventilation
- 2 Solid metal housing
- 3 Thermal cooling system with top and bottom thermostats to regulate the heat
- 4 Dual RS232 controls
- 5 Commercial panel and components
- 6 High brightness and contrast capabilities
- 7 Be warranted the same in landscape and portrait mode
- 8 Cable comp – to eliminate signal strength over long cable lengths.
- 9 Detailed level of on-screen management capabilities, particularly over the colours
- 10 Tile Matrix for video wall applications.

3 DISTRIBUTION

You can distribute content to anywhere in the world via a wide range of networks or, run content offline using a USB memory stick. The NEC system will work seamlessly with your existing network or NEC can offer a suite of affordable broadband technology services, otherwise reserved for the 'big end' of town – the NECTLAN.

Cost Effective

The NECTLAN (Transparent LAN) allows connection of customers into a flexible, secure and private broadband network, providing a cost effective way of implementing a business-grade Wide Area Network. No additional data charges = greater cost efficiency – there are no additional charges for data traffic between business locations within a TLAN network. With the flat-rate TLAN monthly service charge, customers enjoy a predictable cost base for their communications.

Reliability

The TLAN is a private network based upon layer 2 virtual LAN (VLAN) technology. The logic-based VLAN technology is secure, reliable and allows IP layer independence for customers.

Wide Access & Coverage

The NECTLAN operates over a wide range of access technologies including DSL, ISDN/PSTN, Leased Line and Ethernet to provide a tailored bandwidth solution with coverage to almost any location in Australia.

CONNECTIVITY – PUTTING IT ALL TOGETHER

PanelDirector Standard

1 PanelDirector Standard CentreSystem is the software application installed on a Standard PC or Work Station. The Digital Signage System is managed using the CentreSystem Application. The CentreSystem provides the user with a full range of features; for example the user can create programs or content play lists, design a screen layout by splitting the screen or adding text tickers. Display devices can be scheduled to power on and off at specific times extending the life of the display device. Programs are applied to schedules which are in turn distributed to the Digital Signage Players across the network.

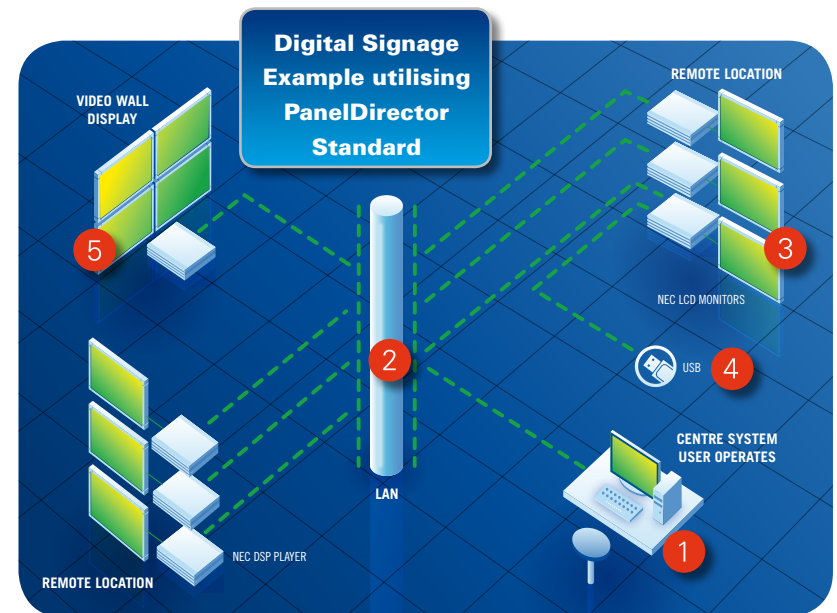
2 PanelDirector utilises industry standard TCP/IP protocols to communicate over local and wide area networks, allowing for integration with new and existing data networks. PanelDirector Standard employs unicast distribution to the PanelSystems.

3 Each display device requiring discrete control requires its own Digital Signage Player. The Digital Signage Player is fully controlled by the PanelDirector PanelSystem application. The PanelSystem displays scheduled content according to the programming created by the user on the CentreSystem. Content and schedules are pushed to the players from the CentreSystem, with the data stored locally at each player. This eliminates redundant data transfer and minimises the impact on existing networks.

4 As the content and schedule data is stored locally, PanelDirector will continue to operate during network outages.

5 In the absence of networks, content and schedules can be distributed to the players via a USB stick. This is particularly useful for applications such as mobile display stands. The USB stick is automatically detected and automatically updates the system when inserted.

Digital Signage players can connect to just about any type of display device including Data Projectors, Plasma Panels, LCD Panels even supported LED signs. LCD Panels can be used in Landscape or Portrait modes and are also supported in Tile Matrix configurations.



CONNECTIVITY – PUTTING IT ALL TOGETHER

PanelDirector Professional

1 PanelDirector Professional is configured differently to the Standard version in that, the Data Centre Service or DCS resides on a separate server along with the HTTP File Server and SQL Database. The DCS is the heart of the signage system and controls all distribution and operational functions, including those of the Digital Signage Players. Content and schedules are distributed to the players by either TCP or HTTP or both protocols. In larger networks these functions may be separated across several servers to accommodate server and network load. PanelDirector Professional supports multiple DCS and File Servers for improved system performance.

2 The PanelDirector Professional CentreSystem is the client application installed on a Standard PC or Work Station which logs in to the DCS and SQL Database. The user manages the Digital Signage System using the CentreSystem Application. The CentreSystem provides the user with a full range of features, for example the user can create programs or play lists for content, design a screen layout by splitting the screen or adding text tickers. Display devices can be scheduled to power on and off at specific times extending the life of the display device. Programs are applied to schedules which are in turn distributed to the Digital Signage Players across the network.

3 PanelDirector utilises industry standard TCP/IP protocols to communicate over local and wide area networks, allowing for integration with new and existing data networks. PanelDirector Professional employs TCP, HTTP or a combination of both protocols to distribute information to the PanelSystems.

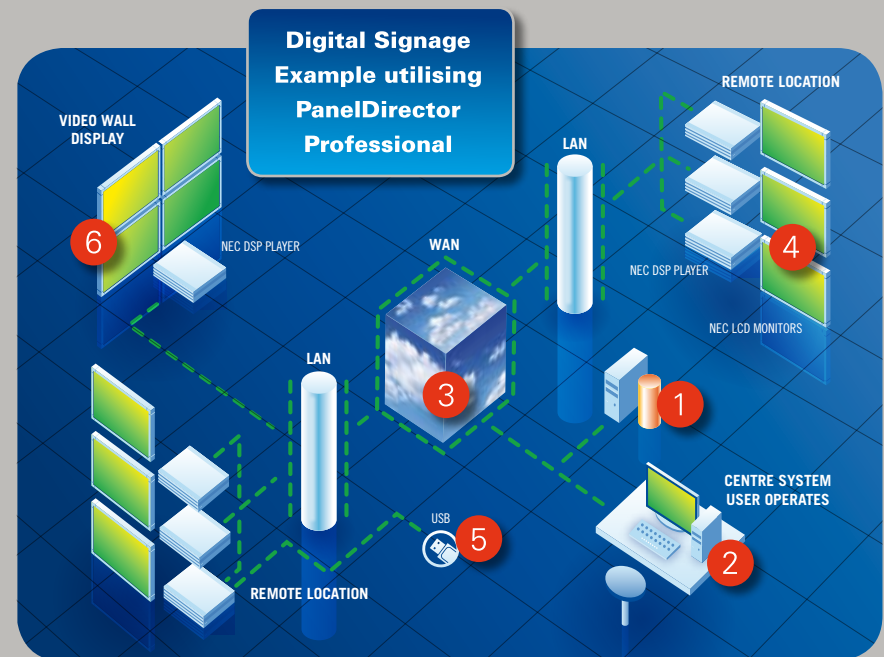
Additional localised file servers may be deployed to reduce data transfer times across wide area networks.

4 Each display device which requires discrete control requires its own Digital Signage Player. The Digital Signage Player is fully controlled by the PanelDirector PanelSystem application.

The PanelSystem displays scheduled content according to the programming created by the user on the CentreSystem. Content and schedules are downloaded from the file servers, with the data stored locally at each player. This eliminates redundant data transfer and minimises the impact on existing networks. As the content is stored locally, PanelDirector will continue to operate during network outages.

5 In the absence of networks, content and schedules can be distributed to the players via a USB stick. This is particularly useful for applications such as mobile display stands. The USB stick is automatically detected and automatically updates the system when inserted.

Digital Signage players can connect to just about any type of display device including Data Projectors, Plasma Panels, LCD Panels even supported LED signs. LCD Panels can be used in Landscape or Portrait modes and are also supported in Tile Matrix configurations.



SERVICE & SUPPORT

Since commencing operation in Australia NEC has provided comprehensive and ongoing support for our products and services.



Support for NEC products comes in many forms including:

- The provision of Service & Repair centres in each state
- Warranty Support
- Spare Parts
- Training

Service & Repair Centres

NEC has service centres in every state and on-site warranty for most products in metropolitan areas, providing national support. These service centres can provide general, technical or product support inquiries including:

- Assistance in the diagnosis of defective product during installation, commissioning and operation

- Technical advice and guidance on any installation, performance, operational, general, technical or product matters or inquiries
- Advice on causes of any software or hardware issues and, if a known problem, whether a proven solution exists
- Advice on possible procedures to alleviate the impact of an issue; and
- Where necessary, escalation of a defect or issue to a higher level of technical or managerial expertise

Warranty Support

In the unlikely event that your NEC product should require after sales support you can rest assured that the full backing of the NEC organisation is at your service.

All NEC products are guaranteed to perform their intended purpose for a specified (warranty) period. Failures occurring during the warranty period, due to workmanship or material, will be repaired or replaced at NEC's discretion.

Spare Parts

Our products are backed by a nation wide network of service centres which carry a wide range of spare parts and accessories.

Training

NEC has augmented its commercial product range with targeted training aimed at getting the most from your digital signage solution.

3RD PARTY EXTRAS

Integration

NEC has a wide network of loyal, reliable installation partners, who can work with NEC to integrate a system to suit your needs.

Content

The PanelDirector software supports a huge range of common files formats, so you can create content as normal without special tools and eliminating the need for expensive printing. Simply combine your existing videos, images, animations or presentations – or mix in new material – and you have content ready to go!

But if you need a hand in the creative department, NEC has creative partners that are ready and able to provide their services to create and customize high impact material, at an affordable price.



Empowered by Innovation

NEC

NEC Digital Signage Solutions

Finally, one company completes the loop in digital signage.

Only NEC can provide a complete end-to-end digital signage solution – from the hardware to software to broadband distribution.

Call **131 632** from anywhere in Australia,
email us at displays@nec.com.au
or visit **nec.com.au**